



WAIKIKI IMPROVEMENT ASSOCIATION

Wikiwiki Wire

E-newsletter keeping you up to date on Waikiki news, features, trends and more!

Volume XIII, No. 5

March 1-14, 2012

Honolulu Festival: Asia-Pacific Culture, Music and Exhibits, March 3-4

A treasured celebration of cultural diversity for the whole family to enjoy, the Honolulu Festival returns with a full slate of music, dance, crafts, arts, special exhibit and fireworks display presented by the people of Asia Pacific, March 3-4.

Admission to the Festival performances and exhibit display is free to everyone and being hosted at three convenient locations – Hawai'i Convention Center, Ala Moana Center, and Waikiki Beach Walk – on Saturday, March 3, from 10:00 a.m. to 5:00 p.m., and Sunday, March 4, from 10:00 a.m. to 3:00 p.m.

Following Sunday's performances, the festivities shift to Waikiki for the Festival's finale. The visiting performers from Asia Pacific will entertain in the Waikiki Grand Parade on Kalakaua Avenue, starting at 4:30 p.m., followed by the spectacular Nagaoka Fireworks Show making its first appearance outside of Japan to light up the skies over Waikiki Beach.



"We encourage everyone to come out and show their support for our visiting performers and celebrate the beauty of our different cultures in the Pacific Rim," said Keiichi Tsujino, president of the Honolulu Festival Foundation. "With free admission and the variety of all there is to enjoy, the Honolulu Festival is perfect for family fun and entertainment."

Continued on next page

Inside this issue:

| | | | |
|-----|---|----|--|
| 1-3 | Honolulu Festival – Asia-Pacific Culture, Music and Exhibits, March 3-4 | 11 | Live Island Music Is In The Air at Duke's Waikiki Throughout March |
| 3 | St. Anthony School Students Win Honolulu Festival's 9th Annual Maui Mikoshi Design Contest | 11 | Hilton Hawaiian Village Waikiki Beach Resort Appoints Regional Marketing and PR Manager for Far East |
| 4 | Waikiki Sand Replenishment Beach Project | 12 | Hula Grill Waikiki Offers Live Music ad Hula Throughout March |
| 4 | Celebrate Girl's Day with Family Photos and Oceanarium Buffet with 50% Discount for Adults and Children Who Wear a Kimono or Yukata | | Attachments |
| 4 | Aston Hotels & Resorts Names Erland Odd Sr. Director of eCommerce | - | Waikiki Beach Sand Replenishment Project Gears Up |
| 5 | Champion Surfer Opens New Surf School at Waikiki Beach Marriott | - | Waikiki Beach Maintenance Project Update |
| 5 | Atlantis Navatek Cruises' St. Patrick's Day Cruise Aboard Navatek I | - | DFS GALLERIA WAIKIKI, March 2012 Event Calendar |
| 6 | The Artist Movement Presents Taryn Manning at Rumpfire | - | Kani Ka Pila Grille Entertainment Schedule |
| 7 | King's Village and Hyatt Enhance Weekly Cultural Activities | - | Outrigger Hotels Schedule of Entertainment & Promotions, Mar 4-10 |
| 7 | Chaniece-Nicole Torralba Promoted t Catering Sales Manager | - | Outrigger Hotels Schedule of Entertainment & Promotions, Mar 11-17 |
| 8 | Señor Frog's Announces Weekday Lunch Specials | - | Celebrate Hula and Hawaiian Culture at The 6th Annual International Waikiki Hula Conference |
| 9 | Hilton Hawaiian Village Waikiki Beach Resort: Home of Hawaii's Music | | |
| 10 | Aqua Lotus Honolulu adds selection of amenities for active kamaaina | | |

... and MORE

Continued from front page

Last year's Honolulu Festival was interrupted by the tragic earthquake and tsunami that struck Japan on March 11, the eve of the Festival's opening. While the Festival proceeded with most of its scheduled activities, more than

30 performing groups comprising more than 800 visitors from Japan had to cancel their trip to Honolulu, with the highly anticipated fireworks show from Nagaoka also canceled out of respect to the victims and their families.

Presented under the banner of "*Pacific Harmony*," the theme for this year's Honolulu Festival is "*Bonding together, hand in hand*." More than 4,500 performers and visitors are coming to Hawai'i from Asia Pacific, mostly Japan. Performers representing the cultures of Japan, China, Taiwan, Korea, Australia, the Philippines, Canada, Alaska, U.S. Mainland, and Hawai'i will dazzle guests with their entertaining displays of music and dance.



"The Honolulu Festival is a great opportunity to celebrate our wonderful cultural traditions and share with our Pacific Rim neighbors," said Mayor Peter Carlisle.

The international visitors coming to Hawai'i for the Honolulu Festival will help boost the economy, adding an estimated \$11 million in visitor spending and \$1.1 million in tax revenue for the weekend of March 3-4. In addition, more than 75,000 people – both residents and visitors – are expected to enjoy the cultural performances, parade and fireworks.

"We are looking forward to welcoming the visitors for this year's Honolulu Festival," said Mike McCartney, president and CEO of the Hawai'i Tourism Authority. "Every year the festival draws thousands of visitors to the Hawaiian Islands to celebrate the unique cultures that make up Asia Pacific. We are pleased to support events like the Honolulu Festival, that not only draw visitors, but highlight what makes Hawai'i so special through our people, place and culture."

David Carey, president & CEO of Outrigger Enterprises Group, noted, "The Honolulu Festival has always been a favorite event of mine because it celebrates the diversity of cultures found in Hawai'i and across the Asia-Pacific region, something Outrigger has celebrated for the past 65 years. Firmly established events and activities like the Honolulu Festival excite travelers from throughout the Pacific and entice them to visit our island state. We are also proud to share the world class Waikiki Beach Walk as a major entertainment venue for the Honolulu Festival. We are looking forward to another great event, made even more special this year as we celebrate Waikiki Beach Walk's fifth anniversary!"

Along with the cultural music and dance performances, the Honolulu Festival offers a variety of other activities and offerings appealing to all ages.

SPECIAL EXHIBITS: The Hawai'i Convention Center will feature a wide array of cultural offerings, arts, crafts, exhibits, and foods from the people of Hawai'i and the Pacific Rim on Saturday, March 3, 10:00 a.m. to 5:00 p.m., and Sunday, March 4, 10:00 a.m. to 3:00 p.m. Highlights include the following:

- **Craft Fair:** Crafters will display a wonderful variety of cultural art and exhibits.
- **Ennichi Corner:** Designed specifically for children, the Ennichi Corner will offer fun, hands-on activities inspired by the traditional Japanese Saint's Day festival. Children will be introduced to customary Japanese games, crafts, foods and traditions.
- **Anime Corner:** The popular cultural phenomenon of Japanese animation will be highlighted by a cosplay cafe, video game tournaments, illustrator workshops, and other exhibits.

Continued on next page

Continued from previous page

BON DANCE – March 3, 11:00 a.m.: The first Bon Dance of 2012 is taking place at the Hawai'i Convention Center and is open to everyone.

MOVIE FESTIVAL: Movie-lovers will enjoy the fascinating stories behind four films from Japan that are being shown at the Hawai'i Convention Center (schedule below). Admission is free.

- *Fukushima Hula Girls*, March 3, 10:30 a.m. – Third Floor, Room 316ABC
This documentary follows the story of a Japanese hula dance troupe over a four-month period following the Japan earthquake and tsunami on March 11, 2011, that severely damaged their hometown of Iwaki City. The troupe organizes “The National Hula Girl Bonding Caravan” and hits the road to lift people’s spirits, including their own.
- *Kono Sora No Hana: The Story of Nagaoka’s Fireworks*, March 3, 1:00 p.m. – Third Floor, Room 316ABC
This film tells the story behind the start of the Nagaoka fireworks and its tribute to the people who have been lost to war and natural disasters. Following the showing will be a special lecture by director Nobuhiko Obayashi.
- *442 – Live with Honor, Die with Dignity*, March 4, 10:30 a.m. – Third Floor, Room 310 (Theatre)
This documentary is about the Japanese American men who fought during World War II in the highly decorated 442nd Regimental Combat Team and the conflict that some felt in having to fight against parents’ fatherland.
- *Wanko – The Story of Me, My Family, and My Dog*, March 4, 1:00 p.m. – Third Floor, Room 310 (Theatre)
This is an inspiring true story about a boy being separated from his dog and what follows after the family has to evacuate their home on Miyake Island following a 2000 volcano eruption.

FRIENDSHIP GALA – March 3, 7:00 to 9:00 p.m.: This evening event at the Hawai'i Convention Center features cultural entertainment from visiting Asia-Pacific performers and delicious cuisine from ten of Hawai'i's top restaurants.

The Friendship Gala is the only paid event and supports the Honolulu Festival Foundation’s educational and cultural programs for schools and children in Hawai'i. Tickets are \$90 per person (\$70 under age 21; free for 5 and under) and are available at www.honolulu festival.com.

St. Anthony School Students Win Honolulu Festival’s 9th Annual Maui Mikoshi Design Contest

The students of St. Anthony Junior-Senior School of Wailuku, Maui are the winners of this year’s Honolulu Festival Maui Mikoshi Design Contest.

A *mikoshi* is a decorative float unique to specific prefectures in Japan that is carried by groups of celebrants during festivals. For the past nine years, the Honolulu Festival has been extending its reach to the Valley Isle by asking Maui high schools to submit a *mikoshi* design based on its theme.

This year’s Festival theme is “Bonding together, hand in hand.” Under the guidance of *Sensei* (teacher) Tokie Sidney, 20 St. Anthony’s students won the competition among Maui high schools to earn a trip to Oahu sponsored by the Honolulu Festival Foundation, Hawaiian Airlines, Outrigger Hotels & Resorts and Kahili Golf Course, to showcase their *mikoshi* at the 18th Annual Honolulu Festival.



The students will display the *mikoshi* at the Hawai'i Convention Center on Saturday, March 3, and then carry it in the Waikiki Grand Parade along Kalākaua Avenue on Sunday, March 4.

Waikīkī Sand Replenishment Beach Project

The Waikīkī Sand Replenishment Beach Project will begin the active beach building phase beginning on March 12th. The project restores sand to 1,730 liner feet from the west end of the Kuhio Beach swim basin to the existing Royal Hawaiian Hotel Groin. Beginning March 12th, areas of Waikīkī beach will be closed for hauling and grading operations between 7 am and 12-noon. The closures will be done in phases to minimize the impact to beach users.

Pedestrians will be able to access the ocean during work times from 7 am to 12-noon each day by crossing through the work area designated crossing locations with the help of crossing guards.

Unrestricted pedestrian access to the shoreline will begin after noon daily.

The project is expected to be completed by the end of April. The work requiring area closures is expected to be completed by April 14.

Celebrate Girl's Day (3-03-12) with Family Photos and Oceanarium Buffet 50% Discount for Adults and Children Who Wear a Kimono or Yukata

Celebrate Girl's Day, March 3rd, with your entire family at the Pacific Beach Hotel's famous Oceanarium Restaurant. The restaurant is offering a 50 percent discount to all adults and children wearing a kimono or yukata to the Oceanarium brunch. To make it a complete family day, a professional photographer will also be on hand from 11:00 a.m. to 1:00 p.m. to capture a family photo of children and families dressed in their festive traditional dress. Families who participate will have their photos emailed to them at no charge.

For Hina Matsuri (Girl's Day), the restaurant will be serving a special brunch menu that features an extensive selection of seafood, traditional Japanese dishes, Prime Rib and Snow Crab Legs. There will also be a mocha station featuring Kinako and Azuki Bean, and children will be treated to Hina Arare.

The Girl's Day Brunch will be offered on Saturday, March 3rd from 11:00 a.m. to 3:00 p.m. For reservations, call (808) 921-6111 or book online at www.pacificbeachhotel.com or www.opentable.com. Validated self-parking is available for \$3.00.



Aston Hotels & Resorts Names Erland Odd Senior Director of eCommerce

Aston Hotels & Resorts announces the appointment of Erland Odd as senior director of eCommerce. A travel industry professional with over 10 years of eCommerce and online solutions experience, he will be responsible for development and management of eCommerce strategies and tactics for web and eCommerce initiatives.

Odd holds a degree in IT and electrical engineering from Goteborgs Tekniska Institute in Sweden and a Bachelor of Science degree in Computer Science and a Master of Science degree in Business Information Systems from Hawai'i Pacific University.

Most recently Odd was the senior director of eBusiness with the Resort Group, for Ko Olina and Princeville Resorts. He is co-founder of Imua Interactive, an e-Solutions provider with emphasis on the travel industry. He directed information systems for Get2Hawaii, launching booking engine services and solutions for companies including Hawaiian Airlines, Panda Travel and American Tours International.



Champion Surfer Opens New Surf School at Waikiki Beach Marriott Resort & Spa

Vacation package includes room, surf lesson and board rental for two

Waikiki Beach Marriott Resort & Spa is making it easier to “hang ten” with the introduction of a new surf school and vacation package!

Champion long board surfer Kai Sallas continues his father’s tradition of surf instruction with the creation of Pro Surf School Hawaii, located at Waikiki Beach Marriott Resort & Spa. His long history and love for the sport began when he was 12 years old, stemming from dad Jr. Sallas who taught young Kai and helped revitalize the surfing culture as one of the original Waikiki Beach Boys. Now, the oceanfront resort is offering a value-added Surf Package for guests to enjoy the waves and learn to surf with Kai and his professional team!

“With Pro Surf School Hawaii now on-site, our guests have the perfect opportunity to learn water safety and surf techniques, tailored to his or her skill level,” said Michael Nisky, general manager of Waikiki Beach Marriott Resort & Spa. “Our beachfront location is especially convenient for guests to practice the skills they have learned, with a safe surf break just a quick paddle away.”



Starting at \$244 per room night, the Surf Package includes the following for two people:

- o Deluxe guest room with lanai (balcony)
- o Two-hour surf lesson by professional surfers – includes surfboard, leash, rash guard, and booties provided
- o Two-day surfboard rental

A minimum three-night stay is required. Children must be at least 11 years old and know how to swim. Valid through December 25, 2012. Based on availability, restrictions may apply. For reservations, visit www.marriottwaikiki.com or call 1-800-367-5370 and quote promotional code SPO.

Located in the tour lobby of Waikiki Beach Marriott Resort & Spa, Pro Surf School Hawaii also offers lessons in stand up paddle and surf tours. It is open daily from 8:00 a.m. to 5:00 p.m. For more information, visit www.prosurfschoolhawaii.com or call (808) 343-9667.

Atlantis Navatek Cruises’ St. Patrick’s Day Cruise Aboard *Navatek I*

Who: Atlantis Navatek Cruises
What: St. Patrick’s Day Dinner Cruise Aboard *Navatek I*
When: Saturday, March 17, 2012, 5:30 p.m. - 7:30 p.m.
Where: *Navatek I* leaves Pier 6, Aloha Tower Marketplace, and cruises along the Waikiki and East Oahu shoreline.

Description: Party at sea like the Irish aboard Atlantis *Navatek Cruises* for St. Patrick’s Day! Wear green and celebrate with Irish music and specialty Green Flash and Green Beer drinks. On the lower deck guests will enjoy the delicious Sunset Buffet while the upper deck guests will be able to indulge in an elegant five-course dinner including Roasted Tenderloin of Beef and Lobster. Corned Beef and Cabbage will also be a featured item on the menu. *Navatek I* offers Hawai’i’s smoothest cruise experience with its state-of-the-art double-hulled technology lifting the vessel above the ocean’s surface.

Cost: Sunset Buffet Dinner Cruise (Lower Deck, Sunset Room)
Adults: \$94.00/Children (2-12) \$53.00, Kamaaina rates are available.

Royal Sunset Dinner Cruise (Upper Deck, Diamond Head Room)
Adults: \$126.00/Children (2-12) \$69.00, Kamaaina rates are available.

Reservations and information: 808-973-1311

The Artist Movement Presents Taryn Manning at Sheraton Waikiki's Rumfire

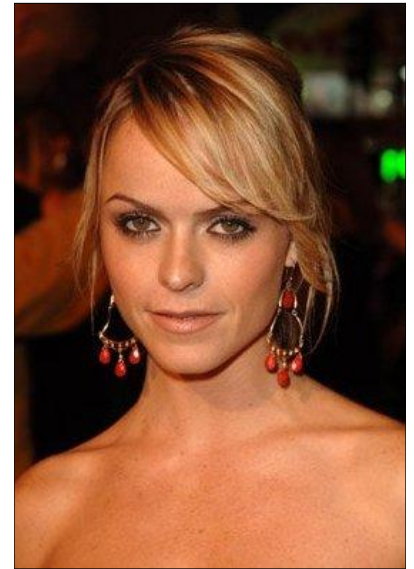
WHAT: Sheraton Waikiki presents The Artist Movement featuring special celebrity guest Taryn Manning who is well-known for her roles in films including 8 Mile, Hawaii Five-O, Hustle & Flow, Sons of Anarchy. Manning is also the leading female vocalist of the band Boomkat.

WHEN: Saturday, March 3, 6 to 11 p.m.

WHERE: RumFire of Sheraton Waikiki

WHO: Pop Mashup (Electro and Hip-Hop)
Celebrity guest DJ Taryn Manning
DJ Lacy from the Hot Muffins

Oceanfront Patio: Soulful House
Ramyt, Drift & Jimmy James



Sheraton Waikiki proudly presents "The Artist Movement" an exclusive event featuring a star-studded bash to be hosted by one of Hawai'i's hottest oceanfront venues, RumFire. The Artist Movement will be open to the public from 6 to 11 p.m. for a general admission of \$20 per person. VIP tables will also be available upon reservation for \$100 which includes admission price.

Guests are encouraged to dress in sexy beach wear to kick-off the evening's entertainment with DJ Lacy of Shimmer & Lace. As the sun sets on the horizon of Waikiki Beach, ocean sounds of dance music will ring through the air transforming the atmosphere and preparing guests for the evening's main headliner, Hawaii Five-O co-star and celebrity DJ Taryn Manning. Also playing in the evenings exciting list of entertainers include Hawai'i's own DJ Ramyt and Drift creating vibes steps away from water's edge.

The Artist Movement in Hawai'i has achieved success in bringing unprecedented and exclusive events from around the world. The organization believed in the importance to expand its services and allow its supporters exclusive access to some of the coolest party destinations in Hawai'i. The Artist Movement was formed by a team of expert event producers and organizers to oversee the success of the newest Hawai'i division as a n effort to expand the organization across the globe. The project was spearheaded by Honolulu's top concept artist and event producer Cyrina D. Hadad and Wallpaper Magazine and artist movement event producer Andreas Counnas.

For more tickets or VIP reservations, please contact Andreas Counnas at [\(310\) 497-6442](tel:3104976442) or ac@amnights.com. Media and celebrity submission are welcome to contact Cyrina Hadad at [\(808\) 347-8616](tel:8083478616) or cyrina@cyrinahadad.com. For more event information, please visit www.AMNIGHTS.com.

Upcoming issues of Waikiki Wiki Wiki Wire:

March 15

April 5 and 19

Deadline to receive member information and images for the issue you are targeting is Wednesday at 5 pm

King's Village and Hyatt Enhance Weekly Cultural Activities

Hyatt Regency Waikiki Beach Resort and Spa announces the addition of new cultural activities at King's Village, located at 131 Kaiulani Avenue. The weekly Friday Farmer's Market event added a year ago, now includes a Monday Farmer's Market from 4 p.m. to 9 p.m. The event features fresh produce, baked goods, and locally made items. Also featured every Tuesday and Thursday is the new Art Walk from 4 p.m. to 9 p.m. As always, the Changing of the King's Guard Show is offered to the public daily at 6:15 p.m. King's Village is open daily from 10 a.m. to 11 p.m. The Hyatt Regency Waikiki Beach Resort and Spa also offers a guided walking tour for guests and the public every Tuesday and Thursday at noon beginning at E Makani Eha on the second floor Diamond Head Tower. The tour takes visitors through the hotel, around the neighboring streets to include King's Village. Admission to all activities is free.

"This is such a great opportunity for us to combine our new cultural programs with our neighbors at King's Village. Hyatt Regency Waikiki Beach's walking tour, which includes the addition of Aka Oclitaria as the new tour guide, encompasses the history of all the names associated with our direct area including the influences King Kalākaua had on Hawaiian culture. Guests and the public can easily spend an afternoon in these two city blocks learning more about Hawaiian culture and discovering local artists," says Jerry Westenhaver, general manager at Hyatt Regency Waikiki Beach Resort and Spa.



King's Village, known for its unique architecture and eclectic array of shops is located behind Hyatt Regency Waikiki Beach Resort and Spa. Some of the featured boutique outlets include Royal Creations, Pipeline Leather I and II, Wayne Gabaylo Gallery, The Jade Tree, Tanaka of Tokyo, and Rock Island Café. To find out more, please visit kings-village.com. For more information about Hyatt Regency Waikiki Beach Resort and Spa or the Pualeilani Atrium Historical Tour, please visit waikiki.hyatt.com.

Chaniece-Nicole Torralba Promoted to Catering Sales Manager at Waikiki Beach Marriott Resort & Spa

Chaniece-Nicole Torralba has been promoted to catering sales manager at the 1,310-room Waikiki Beach Marriott Resort & Spa. As a Marriott Certified Wedding Planner, she will be responsible for working closely with couples to plan and coordinate their wedding, civil union and commitment ceremonies. In addition, she will manage the resort's local catering events, social functions, meetings and small groups.

"Chaniece continues to be a team player who provides quality service to our guests and clientele," said Michael Nisky, general manager of Waikiki Beach Marriott Resort & Spa. "I am pleased to promote her to this well-deserved position in which her keen attention to detail and charisma will benefit all aspects of event coordination."

Torralba began her career at Waikiki Beach Marriott in 2002 as a banquet server, and most recently worked in group sales. A graduate of Kamehameha Schools, Torralba earned a bachelor of science degree in Business Administration and Management from Hawaii Pacific University.

The oceanfront Waikiki Beach Marriott Resort & Spa offers a variety of indoor and outdoor sites, from a garden courtyard surrounded by lush plants and flowers, to ballrooms with dramatic windows and views of renowned Waikiki Beach. The resort is TAG (Travel Alternatives Group) approved, a gay-friendly certification for hotels worldwide, and a member of the International Gay and Lesbian Travel Association (IGLTA).

For more information about catering and wedding services at Waikiki Beach Marriott Resort & Spa, visit MarriottWaikiki.com/Weddings. For information on meetings, visit MarriottWaikiki.com/Meetings.

Señor Frog's Hawaii Announces Weekday Lunch Specials at Royal Hawaiian Center

Offered Monday through Friday from 11:30 a.m. to 3 p.m.

Señor Frog's Hawaii is now offering weekday lunch specials from 11:30 a.m. to 3 p.m. for \$8 or less! Overlooking Kalakaua Avenue from level 3 of Building A at Royal Hawaiian Center, the restaurant and bar features a variety of tasty dishes and refreshing cocktails with a Mexican twist. Patrons can enjoy free Wi-Fi Internet access in addition to one hour of free parking with validation.

"Perfect for a business lunch or quick bite in a casual yet fun setting, our new specials offer kama'aina and visitors an excellent value," said General Manager Salvador Carpinteyro.

The featured deals are:

- o Mondays: Club Sandwich with toasted bread, ham, lettuce, chicken breast, bacon, tomato, pickles, onions and mayo, served with french fries (\$8)
- o Taco Tuesdays: \$1 Taco with a choice of ground beef, chicken or kalua pork. Side dishes are available for \$.50 each.
- o Wednesdays: Mini Chicken Burgers with cheese, lettuce and tomato, served with french fries (\$8)
- o Thursdays: Tacos Dorados – deep-fried chicken tacos served with refried beans, rice, shredded lettuce, pico de gallo and sour cream (\$8)
- o Fridays: Parmesan Chicken – crusted chicken breast with a choice of alfredo sauce or marina sauce, complete with mashed potatoes and refried beans (\$8)



Señor Frog's Hawaii is open daily from 11:30 a.m. to 4 a.m. For further details visit www.senorfrogshawaii.com or call (808) 440-0150.

For more information on Royal Hawaiian Center, visit www.RoyalHawaiianCenter.com or call Lei 'Oahu Guest Services at (808) 922-2299. Follow Royal Hawaiian Center on Twitter @RoyalHawnCtr or "Like" us on Facebook at www.Facebook.com/RoyalHawaiianCenter.

PARKING: Royal Hawaiian Center has the largest parking garage in the heart of Waikikī with 10 levels of parking and more than 600 stalls. The entrance is located up a parking ramp as you enter the Center on the right side of Royal Hawaiian Avenue. The Center's validated parking promotion offers 1 hour free parking with validation and \$1 per hour for the next 3 hours for a maximum of 4 hours. After 4 hours, standard parking rates apply of \$6 per hour. Special event parking validation rates are available at \$5. No minimum purchase is required for validation.

Hawaiian Diacritical Marks

Waikikī Improvement Association recognizes the use of diacritical marks (i.e., glottal stop (ʻ), macron (ā) in place names of Hawai'i, such as Waikikī and Kalākaua Avenue and will include them whenever possible. We also respect the individual use (or not) of these markings for names of organizations and businesses.

There will also be times when we may not have a chance to add or change the markings in all of the articles submitted and when that happens, e kala mai.

Hilton Hawaiian Village Waikiki Beach Resort: Home of Hawai'i's Music

Resort Showcases Some of the Best in Island Music With at Least Two Live Performances Daily

Hawai'i's music is right at home at the Hilton Hawaiian Village Waikiki Beach Resort. After celebrating its golden anniversary in 2011, the resort enters the next 50 years with an increased commitment to live island music. Never before has its rotation of regular performers featured at least four Nā Hōkū Hanohano (Hawai'i's version of the GRAMMY awards) award winners, earning the moniker the "Home of Hawai'i's Music."

Hawaiian music icon Jerry Santos (top photo) is one of the many musicians helping to preserve island music at the Hilton Hawaiian Village. Now in his 19th year of performing at the resort, Santos, along with his group Olomana, has won more than a dozen Nā Hōkū Hanohano awards. Their timeless music is a weekend staple at the resort's Tapa Bar on Friday and Saturday evenings.



Nā Hōkū Hanohano award-winning singer and songwriter Henry Kapono performs Saturday afternoons at the Tropics Grill & Grill, Hilton's beachfront eatery featuring spectacular views of Waikiki Beach. Kapono has been on Hawai'i's music scene for more than four decades, recording 14 albums. He is a regular performer between 4 and 6 p.m. on Saturdays at Tropics.

Also performing at Tropics Bar & Grill on a regular basis is Nohelani Cypriano. She is a leading contemporary vocalist and accomplished musician, has recorded 12 CDs, and has won four Nā Hōkū Hanohano Awards from the Hawai'i Association of Recording Artists. Cypriano can be seen at Tropics on Thursdays between 5:30 and 8:30 p.m., and on Friday evenings beginning at 8 p.m., shortly after the Hilton's fireworks extravaganza dazzles thousands along Waikiki Beach.



Typical Hawaiians plays each Wednesday at the Tapa Bar between 8 and 11 p.m. Typical Hawaiians' Thomson "Palakiko" Enos, Tazra Vegas, and Kalani Kealoha have an electrifying style offering contemporary Hawaiian music and island reggae with a fresh new sound. Their previous albums "In a Positive Vibrations" and "Keep It Together" have topped island charts and won the Nā Hōkū Hanohano award for "Reggae Album of the Year."

Also at the Tapa Bar on Sunday afternoons is Jeff Apaka (middle photo) and the Village Serenaders. Better known as the son of the man (Alfred Apaka) once known as "Hawai'i's Golden Voice," Jeff Apaka got his professional start at the age of 19 and went on to record for Capitol Records and tour the mainland for the Hawai'i Visitors Bureau in 1974.

In addition to these five acts, premier island groups such as Acoustik Playground (bottom photo), Beach 5, Kalua Bay Buddies, Little Albert, Jon Basebase, Juke Joint and Piranha Brothers also perform on a regular basis. For more information, log onto <http://www.hiltonhawaiianvillage.com/music/>. Performance times may change throughout the year, and without notice.

The Hilton Hawaiian Village Beach Resort & Spa is Waikiki's only true destination resort, offering the perfect mix of exceptional resort accommodations and classic hospitality on Waikiki's widest stretch of beach. The resort features more than 90 shops and 16 restaurants, lounges and bars; and every Friday evening, it sets the stage for a celebration of Hawaiian culture and entertainment ending in a spectacular fireworks show.

For reservations, call the hotel directly at (808) 949-4321, toll-free at 1-800-HILTONS (1-800-445-8667), or by logging on to www.hiltonhawaiianvillage.com. Or find us on Facebook at www.facebook.com/hiltonhawaiianvillage.



Aqua Lotus Honolulu adds selection of amenities for active kama'āina

Aqua Lotus Honolulu recently added a selection of amenities that appeal to everyone including active and health-oriented kama'āina.



L-R lobby living room, penthouse suite, pair of beach cruiser bicycles

“Aqua Lotus Honolulu is a small, intimate hotel so it’s natural to offer personalized services and amenities for kama’āina to enjoy during their stay,” said Elizabeth Churchill, Aqua’s VP Sales & Marketing. “We also took advantage of the hotel’s great location by offering activities that encourage making the most of nearby Kapi’olani Park, Diamond Head and Waikīkī Beach.”

The 51-room Aqua Lotus Honolulu added the following new services and amenities:

- Complimentary Coffee and Tea Service, served daily in the lobby from 5:30 am to 9 am
- Complimentary Wine Service, a great way to transition from afternoon to evening, served daily in the lobby from 4 pm to 6 pm
- Complimentary Beach Chairs & Towels for relaxing on the sand
- Complimentary Beach Cruiser Bikes, perfect for rides around Kapi’olani Park, Diamond Head and other nearby scenic sites
- Complimentary morning yoga session in the park to stretch and rejuvenate, 7:30 am on Tuesday, Thursday, Saturday & Sunday
- Fitness & Wellness Concierge, a personalized program from Infinity Fitness & Massage (fee)

Accommodations at Aqua Lotus Honolulu are truly comfortable and stylish with beautiful Asian-inspired furnishings. Rooms offer many desirable features including: private lanai, oversized desk, I-Pod docking station, personalized climate control, mini-refrigerator and electronic in-room safe. Recently, the hotel waived daily fees for local or toll free phone calls and WiFi / Internet.

Aqua Lotus Honolulu is ranked in the Top 20 on TripAdvisor. It is an intimate boutique hotel, great romantic hideaway, pet-friendly hotel, peaceful refuge and an excellent choice when going to a concert at the Waikīkī Shell. The hotel is an excellent choice for kamaaina looking to spend a couple of nights at a great hotel.

Kama’āina rates start from \$159 per night plus taxes for a 455 square foot Diamond Head View room with a king or two double beds with 350-thread-count linens and goose down comforter and pillows.

For more information about Aqua Lotus Honolulu, www.aqualotus.com.

For reservations, book online or call Aqua at 808-924-6543.

Live Island Music Is In The Air at Duke's Waikiki Daily Throughout March

Spring is around the corner and what better way to enjoy it than with live music at Duke's Waikiki throughout March. Guests can enjoy beachfront dining complemented by some of the island's best local entertainment including Maunalua, Beach 5 and the "Wild Hawaiian" Henry Kapono. Diners will enjoy special live "Concerts on the Beach" from 4-6 p.m. followed by live late night music from 9:30 p.m. until midnight. Sunday afternoons will be filled with the legendary sounds of Henry Kapono from 4-6 p.m. The March entertainment schedule is as follows:

"Concerts on the Beach" – 4-6 p.m.:

- Haumea Warrington – Mondays through Thursdays
- Maunalua – Fridays
- Beach 5 – Saturdays, March 3, 10 & 31
- Kona Chang Duo – March 17
- Vaihi – Saturday, March 24
- Henry Kapono – Sundays

Late night live music – 9:30 p.m. until midnight:

- Ellsworth Simeona – Mondays through Thursdays
- Lawernece Kidder – Fridays
- Kona Chang Duo – Saturdays, March 3
- Kaiona Duo – Saturday, March 10
- Chris Murphy Duo – Saturday, March 17
- Mike Tulba Duo – Saturday, March 24
- Tahiti Rey Duo – Saturday, March 31

Named "Best Place to Take Visitors" by *Honolulu Magazine*, "Best Place to Go on a Sunday" by *Honolulu Weekly* readers and "Best Nightlife Venue" in Hawai'i by *Zagat Survey*, Duke's Waikiki pays tribute to famed waterman Duke Kahanamoku and provides an authentic and enjoyable Hawaiian-style dining experience. Duke's Waikiki is located at 2335 Kalākaua Avenue, beachside in the Outrigger Waikiki on the Beach Hotel. Validated parking is available at OHANA East Hotel. Reservations: (808) 922-2268, website: www.dukeswaikiki.com.

Hilton Hawaiian Village Waikiki Beach Resort Appoints Regional Marketing and Public Relations Manager for Far East

Megumi Haubner has been named regional marketing and public relations manager, Far East, for Hilton Hawaii.

In her new role, Haubner oversees Hilton Hawaii's marketing and public relations efforts for the Asia market, focusing on Japan, China and Korea. Her responsibilities include coordinating media tie-ups, photo shoots, video filming and television productions. Haubner also manages the marketing of the Hawai'i properties in Asia, which include Hilton Hawaiian Village, Hilton Waikoloa Village, DoubleTree by Hilton Alana Waikiki and the Grand Wailea.

Haubner was most recently at Best Bridal Hawaii, where she oversaw operations, marketing and public relations for its Hawai'i wedding operation. As destination wedding manager, she planned and executed department budgets, trained and managed wedding coordinators and created public relations and marketing campaigns, including product introductions. She also worked at JMAS System Corporation in Tokyo in the human resources department.

Haubner received a bachelor of science degree in business administration from the University of Southern Mississippi and an associate of arts degree in economics at Kaetsu Women's College in Tokyo.



Hula Grill Waikiki Offers Live Music and Hula Throughout March

This March, Hula Grill Waikiki will serve up the sweet sounds of live music nightly from 7 to 9 p.m., with hula dancers providing an extra bit of Aloha on Friday, Saturday, and Sunday evenings. In addition to live entertainment, the oceanfront restaurant offers the mouthwatering flavors of Hawai'i Regional Cuisine and refreshing island cocktails complemented by gorgeous views of Diamond Head and colorful sunsets. The March entertainment schedule is as follows:

Mondays

Alika Souza (March 5)
Eric Lee (March 12 & 19)
David Asing (March 26)

Tuesdays

Kamuela Kahoano

Wednesdays

Jeremy Cheng

Thursdays

Sheila Waiwaiole & Mara Sagapolu

Fridays

Alika Souza & Johnny Kukui with Kealoha

Saturdays

Kaipo Dabin and Kauokalani Moikeha with Kapua (March 3, 17 & 31)

Kaipo Dabin and Buzzy Kealoha with Kapua (March 10 & 24)

Sundays

Kalani Maio & Leilani Vakauta with Kealoha

Hula Grill Waikiki is a joint partnership between T S Restaurants and Outrigger Hotels & Resorts Hawaii. Hula Grill Waikiki is located directly above its sister restaurant Duke's Waikiki, on the second level of the Outrigger Waikiki on the Beach, 2335 Kalākaua Avenue. The open-air restaurant is open for breakfast from 6:30 to 10:30 a.m., dinner from 5 to 10 p.m., with the Plantation Bar open from 4 to 11:00 p.m. daily and Aloha Hour with food and beverage specials from 4 to 6 p.m. daily. Valet parking is available. For reservations or more information, call (808) 923-HULA (4852).

Waikīkī Hula Show at the Kūhiō Beach Hula Mound

Kūhiō Beach Hula Show – January 2012

Show time is **6:30 pm**

Authentic Hawaiian music and hula shows by Hawai'i's finest *hālau hula* (dance troupes) and Hawaiian performers.

Opens with torch lighting and traditional blowing of conch shell. Tues-Thurs-Sat-Sun, weather-permitting. 6:30-7:30 p.m. (6:00-7:00 p.m. Nov-Dec-Jan) at the Kūhiō Beach Hula Mound, diagonally across from Hyatt Regency Waikiki Beach hotel at Uluniu & Kalākaua Ave.

Outdoors, casual, seating on the grass; beach chairs, mats, etc. okay. Cameras welcome. Presented by Hyatt Regency Waikiki Beach, Hawai'i Tourism Authority, City & County of Honolulu and Waikīkī Improvement Association.

For information, call 843-8002.

Week-nights

Every Tuesday – Ainsley Halemanu and Hula Halau Ka Liko O Ka Palai

Every Thursday – Joan "Aunty Pudgie" Young and Puamelia

Week-ends

Sat Mar 3 – Jack McKeague and Halau Ka Pa Hula O Ka Lei Hulu Hiwa

Sun Mar 4 – NO SHOW - Honolulu Festivals Parade

Sat Mar 10 – Kale Pawai and Halau Na Pua Mai Ka Lani

Sun Mar 11 – Colsen Ina Kanei and Halau Kawaiianuhealehua



Street activity in / near Waikīkī (courtesy of the City)

March 4, 2012 Sunday
7:00AM Starts
9:00AM Ends

HAWAII PACIFIC HEALTH WOMEN'S 10K RUN sponsored by Hawaii Pacific Health. The event is expected to have 1,800 runners. The event will start at Kapiolani Park Band Stand at Kalākaua Ave., to Diamond Head Rd., to Kahala Ave., to Paikau St., to Diamond Head Rd., to 22nd Ave., to Kilauea Ave., to Elepaio St., to Kahala Ave., to Diamond Head Rd., to Kalākaua Ave., to end at the Honolulu Marathon finish line.

Contact: KC Carlberg 946-0346, E-mail: TryFitness@hawaii.rr.com

March 4, 2012 Sunday
4:30PM Starts
7:30PM Ends

HONOLULU FESTIVALS PARADE sponsored by JTB Hawaii/Honolulu Festival Organizing Committee. The event is expected to have 3,000 marchers, 35 vehicles & 6 bands. It will start at Kalākaua Ave. at Saratoga Rd., kkhd on Kalākaua Ave., to end at Waikiki Shell parking lot, Queen Kapiolani Park.

Contact: Glenn Kosuge 921-1795, Fax: 926-9247, E-mail: gkosuge@honfest.com For more info, visit their website: <http://www.honolulu festival.com/>

March 11, 2012 Sunday
6:00AM Starts
11:00AM Ends

HAPALUA HONOLULU MARATHON HALF MARATHON sponsored by Honolulu Marathon Association. They expect to have 3,000+ runners. It will start on Kalākaua Ave., near Dukes Statue, head ewa on Kalākaua Ave., to Ala Moana Blvd., to Nimitz Hwy., to Smith St., to King St., to Punchbowl St., to Ala Moana Blvd., to Kalākaua Ave., to Monsarrat Ave., to Diamond Head Rd., to Kalākaua Ave., end at Honolulu Marathon finish/Kapiolani Bandstand.

Contact: Honolulu Marathon Assn. 734-7200 Fax: 732-7057 For more info, visit their website: <http://www.honolulumarathon.org/>



WAIKĪKĪ IMPROVEMENT ASSOCIATION

2250 Kalākaua Avenue, Suite 405-2, Honolulu, HI 96815

Waikīkī Wikiwiki Wire is published weekly by Sandi Yara Communications for WIA
If you would like to share your news with other members, please send your info to:
editor@waikikiimprovement.com



DEPARTMENT OF LAND AND NATURAL RESOURCES

News Release

NEIL ABERCROMBIE
GOVERNOR

WILLIAM J. AILA JR.
CHAIRPERSON

For Immediate Release: March 1, 2012

**WAIKIKI BEACH SAND REPLENISHMENT PROJECT
GEARS UP FOR PLACEMENT OF SAND**

Waikiki beach still open for public to enjoy

HONOLULU — An ongoing three-month public-private partnership to improve Waikiki Beach by restoring this valuable and heavily utilized recreational area will shift into active beach-building phase beginning March 12. The Department of Land and Natural Resources (DLNR) is conducting a project to restore sand to approximately 1,730 linear feet of shoreline from the west end of the Kuhio Beach swim basin, near the Duke Kahanamoku statue, to the existing Royal Hawaiian groin.

The affected work area is limited to this relatively small stretch of Waikiki Beach. Ocean accessibility is being maintained at all times during the project. Pedestrian access through the project area will be provided at intervals along the beach to ensure public access to the ocean at all times. The public may also choose to walk around the work area.

This project is a prime example of public and private partnerships, with financial support coming from DLNR's Beach Fund, the Hawai'i Tourism Authority, and Kyo-Ya Hotels and Resorts, LP.

Bringing natural sand from nearshore deposits back to the beach will have significant beneficial impacts to the state's most famous beach consistent with protecting the local environment, strengthening the desirability of Waikiki as a resort destination, and enhancing the enjoyment of the beach by visitors

(more)

Since active work began January 23, a substantial amount of sand has already been recovered from offshore deposits via a suction dredge barge, and placed in a holding area in the Kuhio beach basin. This sand is now ready for distribution along Waikiki beach.

While the preferred method for moving the sand onto Waikiki beach was to blow the dried sand through a pipe along the beach for placement, the desired results were not obtained.

“We recognize the high importance of Waikiki to our visitors, our visitor industry and its employees, and to local residents. To expedite the completion of the project -- on schedule and on budget -- our contractor will activate their secondary plan of using machinery to manually move and place the sand in its final location,” said William J. Aila, Jr., DLNR Chairperson.

“We are thankful for the continuing support of our partners, including the Waikiki Improvement Association, Hawai‘i Hotel Association, and City and County of Honolulu, who recognize that every effort is being made to minimize inconvenience to the public, and who are actively engaged in helping visitors understand that Waikiki beach is still open for use and that this project will bring about a better beach we can all enjoy,” Aila said.

“Everyone worked really hard to consider various options to complete this important project while reducing the inconveniences to residents, businesses and visitors, and still keep Waikiki Beach open,” said Mike McCartney, president and CEO of the Hawai‘i Tourism Authority.

“Waikiki is one of the quintessential images of Hawai‘i that attracts thousands of visitors and residents to its shores each year. When the project is completed, the Waikiki shoreline will be restored and enjoyed by all for years to come. This project is an essential long-term investment in Waikiki, our visitor industry infrastructure and Hawai‘i’s tourism economy,” McCartney said.

“This project to improve Waikiki Beach is long overdue,” said Rick Egged, president of the Waikiki Improvement Association. “Since 1985, this area of shoreline has experienced significant beach loss due to long-term, chronic erosion. By recycling eroded sand that lies just offshore, we can expand the recreational beach and provide significantly more space for visitors and residents to enjoy Waikiki.”

Beginning March 12, areas of the beach will be cordoned-off during active hauling and grading operations between 7 a.m. and noon seven days a week. The project will be done in phases to minimize the impact to beach users.

Pedestrians will be able to access the ocean at the affected work areas during work times from 7 a.m. to noon each day by crossing through designated locations with the help of crossing guards. The only beach closure will occur in the ‘Ewa Basin of Kuhio Beach, but this area will be opened by noon each day.

Work requiring area closures is expected to be completed by April 14, with the entire project finished by the end of April, as scheduled.

“Buffing out the Beach” Waikiki beach project goes into beach-building stage

Project construction will be performed in close coordination with all appropriate agencies, including: DLNR; the state Department of Health, City and County Ocean Safety, Fire and Rescue; Honolulu Police Department; and city Department of Parks and Recreation.

DLNR, contractor Healy Tibbetts and hotels will be posting notices along the work area, in nearby hotels, and online to notify beach users of the temporary, phased closures.

Project general information, daily updates on the construction schedule and helpful instructions for beach access will be posted at www.WaikikiBeachProject.com

###

For more information, news media may contact:
Deborah Ward
DLNR Public Information Specialist
Phone: (808) 587-0320

WAIKIKI BEACH MAINTENANCE PROJECT UPDATE

State of Hawaii, Department of Land and Natural Resources

The Hawaii Department of Land and Natural Resources (DLNR) is conducting a project to restore sand to approximately 1,730 feet of shoreline from the west end of the Kuhio Beach crib walls, near the Duke Kahanamoku statue, to the existing Royal Hawaiian groin.



Existing Beach



Nourished Beach

Sand hauling activities are scheduled to begin March 12th and will require sections of Waikiki Beach to be cordoned off from 7 am to 12-noon, seven days a week. Sand placement activities are expected to be complete April 14th, with the entire project complete on schedule by the end of April.

- Daily sand hauling along a stretch of Waikiki Beach will occur from 7 am to 12-noon.
- Grading and surveying operations will continue on a portion of the beach until 2 pm daily.
- Lateral access along the work area will be provided at all times.
- Pedestrians will be able to access the ocean during work times from 7 am to 12-noon daily by crossing over the haul route at designated crossing locations with the help of crossing guards.
- Unrestricted pedestrian access to the shoreline through the work area at additional locations will begin after 12-noon daily.
- The Diamond Head end of Kuhio basin will remain off-limits for the duration of the project.
- Signs will be posted along the work area to advise residents and visitors of the project and direct them to the nearest ocean access point.

Outcomes:

The proposed project will improve Waikiki Beach by restoring a valuable and heavily utilized recreational beach, and will have significant beneficial impacts to recreational activities consistent with protecting the local environment.

The economic value of Waikiki Beach to Hawaii's visitor industry and the economic success of Waikiki as a visitor destination are extremely significant. The estimated socio-economic loss to the state would be quite high if Waikiki Beach is not maintained and is allowed to erode away – an estimated \$2 billion loss in overall visitor expenditures, \$125 million loss in tax revenue and 6,350 jobs lost.



Project Activities:

- Recovery of roughly 24,000 cubic yards of sand from deposits located 1,500 to 3,000 feet offshore of the project area in a water depth of about 10 to 20 feet.
- Pumping sand to an onshore dewatering site within the eastern Kuhio Beach crib walls.
- Truck transport of sand along the shore in the project area to its final placement location.
- Using a tractor, sand will be placed according to design beach profiles to ensure the right amount of sand is located in the correct sections of beach.
- Removal of two deteriorated groin structures located makai of the Duke Kahanamoku statue.

Regular project updates will be available through the Office of Conservation and Coastal Lands Website, courtesy of the Department of Land and Natural Resources: www.WaikikiBeachProject.com

Frequently Asked Questions:

What is happening?

The Hawaii Department of Land and Natural Resources, with the cooperation and support of the Hawaii Tourism Authority and Kyo-ya Hotels and Resorts, is restoring a valuable and heavily utilized portion of Waikiki Beach by recovering and recycling sand that has eroded from the shoreline over time.

Why does the beach need to be maintained?

Since 1985 the project area shoreline has experienced significant beach loss due to long-term chronic erosion. After studying decades of aerial photos and looking at the results of previous beach improvement projects in the area, the State DLNR and Sea Engineering, Inc. designed a maintenance plan that will take some of that eroded sand that is sitting very close to shore and move it back onto the beach. This “recycling” program offers a more efficient method for maintaining a recreational beach while mitigating some of the environmental effects of imported sand to the Waikiki ecosystem over the past sixty-plus years.

Why the update?

The preferred method for recovering and recycling the sand was to use a barge to pump it from the waters off Waikiki into a holding area on land, then gently blow the dried sand through a pipe along the beach for placement. The pumping of the sand has been going well and is continuing. There have been mechanical difficulties with blowing the dried sand through a pipe laterally down the beach.

In order to expedite the completion of the project, the State has decided to activate its back up plan of using machinery to manually move and place the sand in its final location. Beginning March 12th, hauling operations will necessitate that sections of Waikiki Beach be cordoned off from 7 am to 12-noon daily. During these times, pedestrian access points through the work area will be provided to allow visitors and residents access to the ocean.

Which areas of Waikiki Beach will be impacted?

The project work area will include the beach fronting the Marriott Waikiki and extend Ewa (west) through the beach fronting The Royal Hawaiian Hotel. Beach areas Diamond Head (east) of the Kapahulu Groin and Ewa of the Royal Hawaiian Hotel will not be impacted by the project.

When will the work be taking place?

Beginning March 12th, hauling operations will take place 7 am to 12-noon seven days a week. There will be limited shoreline access through the project area during work hours, with unrestricted access resuming at 12-noon each day in most areas. Grading and surveying operations on a portion of the beach will continue each day until 2 pm. Sand placement activities are expected to be complete April 14th, with the entire project finished by the end of April, as scheduled.

Will I be able to move along the shoreline?

Lateral access along the project area will be provided at all times. The work area will be clearly marked with uninterrupted barricades to protect pedestrians and signs with arrows to the nearest beach access.

How is this project being funded?

This is a great example of a public/private partnership aimed at improving one of Hawaii's most valuable environmental resources and an iconic local amenity. The Department of Land and Natural Resources has taken the lead in sponsoring the project and both the Hawaiian Tourism Authority and Kyo-ya Hotels & Resorts have made significant contributions.

How does the process work?

Like the previous beach restoration project in Waikiki in 2006, a barge will float over a large pocket of sand and pump it through a pipeline to a large basin on the beach. After the sand dries it will be moved by one of three hauling trucks to its final location on the beach. A tractor will then distribute and grade the sand to predetermined design elevations.

Why is there equipment on the beach?

The project is designed to take up as little of the existing beach as possible while the team is making the beach larger for everyone, but some equipment is needed to make sure the project work is done as quickly and safely as possible.

What about my favorite beach spot, why is it roped off?

To make sure residents, visitors, and workers all remain as safe as possible during the project, some parts of the beach will be temporarily off limits. The team will be working very closely with the City & County Lifeguards to minimize the amount of beach that is inaccessible at any time. Remember, if your favorite spot is cordoned off, it may mean that you will have more room to spread out once the area is re-opened.

What can I do to help?

- Please enjoy the open areas of the beach during the project – remember, you are in Waikiki!
- Please obey all signs and any instructions from the Project Team – we want you to be safe.
- Please do not try to sneak past a barricade or fence for a closer look – you should be able to see the work from a safe distance.
- Please pay attention to the lifeguards – they are also there every day to protect you.

MAHALO FOR YOUR COOPERATION AND ENJOY YOUR LARGER WAIKIKI BEACH!!!

Regular project updates will be available through the Office of Conservation and Coastal Lands Website, courtesy of the Department of Land and Natural Resources: www.WaikikiBeachProject.com



DFS GALLERIA WAIKIKI

March 2012 Event Calendar

<Level 3>

Tag Heuer Boutique

FOR THE DRIVE OF YOUR LIFE.

Test your driving skills in a Formula 1 race car simulator on actual world tracks.

March 1 – 31 / 7 pm – 10 pm

<Level 2 - Beauty>

SPECIAL EVENTS @ BEAUTY EVENT AREA

Dior

March 1 – 4 & March 19 – April 1 / 7 pm – 10 pm

Estée Lauder

March 5 – 18 / 7 pm – 10 pm

BEAUTY COUNTER EVENTS

Aveda

Hair Stylist Event

March 2, 3, 9, 10, 16, 17, 20, 23, 24, 30, 31 / 7:30 pm – 10:30 pm

Givenchy

Makeup Event

March 8 - 9 / 7 pm – 10 pm

Clinique

Complimentary Skincare Consultation

March 13 – 15 / 7 pm – 10 pm

Jurlique

Complimentary Hand Massage

March 14 – 16 / 3 pm – 6 pm

Origins

Complimentary Skincare Consultation

March 27 – 29 / 7 pm – 10 pm

BEAUTY AFTER DARK

Enjoy a glass of champagne as you experience the wonderful products and services of the Beauty World.

Receive a complimentary make-over and a professional photograph at the Beauty After Dark Studio.

March 10, 24 / 8 pm – 10 pm

<Level 2 – Fashion>

LeSportsac

March 2, 22, 29 / 6 pm – 9 pm

Complimentary Embroidery Service with your LeSportsac purchase

DFS GALLERIA WAIKIKI

Corner of Kalakaua & Royal Hawaiian Avenues | Open Daily 9 am - 11 pm

808.931.2700 | www.dfsgalleria.com



Kani Ka Pila Grille ENTERTAINMENT LINEUP MARCH 2012

| SUNDAY | MONDAY | TUESDAY | WEDNESDAY | THURSDAY | FRIDAY | SATURDAY |
|----------------------|-------------------|-----------------------|---------------------|----------------------|---------------|---------------------|
| | | | | 01 Kawika Kahiapo | 02 Kaukahi | 03 Waipuna |
| 04 Brother Noland | 05 Sean Naauao | 06 Weldon Kekauoha | 07 Cyril Pahinui | 08 Kawika Kahiapo | 09 Kaukahi | 10 Manoa DNA |
| 11 Brother Noland | 12 Sean Naauao | 13 Weldon Kekauoha | 14 Cyril Pahinui | 15 Kawika Kahiapo | 16 Kaukahi | 17 Manoa DNA |
| 18 Brother Noland | 19 Sean Naauao | 20 Weldon Kekauoha | 21 Cyril Pahinui | 22 Kawika Kahiapo | 23 Kaukahi | 24 Manoa DNA |
| 25 Brother Noland | 26 Sean Naauao | 27 Weldon Kekauoha | 28 Cyril Pahinui | 29 Kawika Kahiapo | 30 Kaukahi | 31 Manoa Madness |
| | | | | | | |

*Artist and times may change without notice.

Nightly entertainment 6:00 pm - 9:00 pm. Located poolside at the Outrigger Reef on the Beach, 2169 Kalia Road, Honolulu, HI 96815 Phone: 808.924.4990
No cover, no minimum. All-day dining menu. Discount valet parking \$6 for four hours.

Weekly Events & Promotions

March 4-10, 2011



Sunday, 3/4

HOLIDAY INN WAIKIKI
BEACHCOMBER RESORT:

➤8p Jimmy Buffett's: Jeremy Cheng (info. 791-1200)

OUTRIGGER REEF:

➤3-5p Kani Ka Pila Grill: Happy Hour / 6-9p Brother Noland (info. 924-4990)
****March Promotions****
~Serenity Spa Hawaii (For more info. call: 926-2882)

OUTRIGGER WAIKIKI:

➤4-6p Duke's: Henry Kapono (info. 922-2268)
➤2p Hula Grill: Aloha Hour / 7-9p Kalani Maio & Leilani Vakauta w/Kealoha (info. 923-4852)

WAIKIKI BEACH WALK:

➤10a-3p 2012 Honolulu Festival, Performances, Fountain Stage (info. 931-3591)
➤3-6 & 6-9, Girl Scouts - Cookie Program, Plaza (info. 931-3591)
➤Giovanni Pastrami: Live Satellite SPORTS (info. 923-2100)
****March Promotions****
~Island Heritage (For more info. call: 923-4400)
~Sushi 2 Go by Kaiwa: Daily Lunch Specials (For more info. call: 924-0555)
~Yard House: March 16 & 17, Special Menu for St. Patrick's Day (info. 923-9273)

Monday, 3/5

OUTRIGGER REEF:

➤3-5p Kani Ka Pila Grill: Happy Hour / 6-9p Sean Naauao (info. 924-4990)

OUTRIGGER WAIKIKI:

➤4-6p Duke's: Haumea Warrington / 9:30p-12a Ellsworth Simeona (info. 922-2268)
➤4p Hula Grill: Aloha Hour / 7-9p Alika Souza (info. 923-4852)

Tuesday, 3/6

HOLIDAY INN WAIKIKI
BEACHCOMBER RESORT:
OUTRIGGER REEF:

➤9a-5p Jimmy Buffett's: Free Surfing Museum Tours (info. 791-1200)

OUTRIGGER WAIKIKI:

➤11a Kuloko Arts of Hawaii: FREE "Watercolor Lessons" w/ Patrice Federshpil (info. 922-5110)
➤3-5p Kani Ka Pila Grill: Happy Hour / 6-9p Weldon Kekauoha (info. 924-4990)
➤4-6p Duke's: Haumea Warrington / 9:30p-12a Ellsworth Simeona (info. 922-2268)
➤4p Hula Grill: Aloha Hour / 7-9p Kamuela Kahoano (info. 923-4852)
➤8:30p SOS Main Showroom: SOCIETY OF SEVEN (info. 923-7469)
➤4:30-6p "Ku Ha'aheo"~ Evening Hula, Fountain Stage (info. 931-3591)

WAIKIKI BEACH WALK:

Wednesday, 3/7

OUTRIGGER REEF:
OUTRIGGER WAIKIKI:

➤3-5p Kani Ka Pila Grill: Happy Hour / 6-9p Cyril Pahinui (info. 924-4990)
➤4-6p Duke's: Haumea Warrington / 9:30p-12a Ellsworth Simeona (info. 922-2268)
➤4p Hula Grill: Aloha Hour / 7-9p Jeremy Cheng (info. 923-4852)
➤8:30p SOS Main Showroom: SOCIETY OF SEVEN (info. 923-7469)

WAIKIKI BEACH WALK:

➤4-4:45p "Free" Yoga on the Lawn (info. 922-0171)

Thursday, 3/8

HOLIDAY INN WAIKIKI
BEACHCOMBER RESORT:
OUTRIGGER REEF:

➤9:00p Jimmy Buffett's: Borderline (info. 791-1200)

OUTRIGGER WAIKIKI:

➤3-5p Kani Ka Pila Grill: Happy Hour / 6-9p Kawika Kahiapo (info. 924-4990)
➤3p Strolling Hawaiian music & hula, Upper & Lower lobby
➤4-6p Duke's: Haumea Warrington / 9:30p-12a Ellsworth Simeona (info. 922-2268)
➤4p Hula Grill: Aloha Hour / 7-9p Sheila Waiwaiole & Mara Sagapolu (info. 923-4852)
➤8:30p SOS Main Showroom: SOCIETY OF SEVEN (info. 923-7469)

Friday, 3/9

HOLIDAY INN WAIKIKI
BEACHCOMBER RESORT:

➤9:30a-5p Jimmy Buffett's: Free Surfing Museum Tours (info. 791-1200)
➤9:30p Kailua Bay Buddies

OUTRIGGER REEF:

➤6:30-8:30p Kuloko Arts of Hawaii: Shoji Ledward (info. 922-5110)
➤3-5p Kani Ka Pila Grill: Happy Hour / 6-9p Kaukahi (info. 924-4990)

OUTRIGGER WAIKIKI:

➤5p Piano by Jeanette Traviyas, piano area
➤4-6p Duke's: Maunaloa / 9:30p-12a Lawrence Kidder (info. 922-2268)
➤4p Hula Grill: Aloha Hour / 7-9p Alika Souza & Johnny Kukui w/Kealoha (info. 923-4852)
➤8:30p SOS Main Showroom: SOCIETY OF SEVEN (info. 923-7469)
➤3-6 & 6-9, Girl Scouts - Cookie Program, Plaza (info. 931-3591)

WAIKIKI BEACH WALK:

Saturday, 3/10

HOLIDAY INN WAIKIKI
BEACHCOMBER RESORT:

➤9:30p Jimmy Buffett's: Kailua Bay Buddies (info. 791-1200)

OUTRIGGER REEF:

➤3-5p Kani Ka Pila Grill: Happy Hour / 6-9p Manoa DNA (info. 924-4990)

OUTRIGGER WAIKIKI:

➤4-6p Duke's: Beach 5 / 9:30p-12a Kaiona Duo (info. 922-2268)
➤3:30p Hula Grill: Aloha Hour / 7-9p Kaipo Dabin & Buzzy Kealoha w/Kapua (info. 923-4852)
➤SOS Main Showroom: 8:30p, SOCIETY OF SEVEN

WAIKIKI BEACH WALK:

➤3-6 & 6-9, Girl Scouts - Cookie Program, Plaza (info. 931-3591)
➤Giovanni Pastrami: Live Satellite SPORTS (info. 923-2100)

Activities are subject to change or cancellation without notice ~ weather permitting

Weekly Events & Promotions

March 11-17, 2011



Sunday, 3/11

HOLIDAY INN WAIKIKI
BEACHCOMBER RESORT:
OUTRIGGER REEF:

➤8p Jimmy Buffett's: Jeremy Cheng (info. 791-1200)

OUTRIGGER WAIKIKI:

➤3-5p Kani Ka Pila Grill: Happy Hour / 6-9p Brother Noland (info. 924-4990)

****March Promotions****

~Serenity Spa Hawaii (For more info. call: 926-2882)

WAIKIKI BEACH WALK:

➤4-6p Duke's: Henry Kapono (info. 922-2268)

➤2p Hula Grill: Aloha Hour / 7-9p Kalani Maio & Leilani Vakauta w/Kealoha (info. 923-4852)

➤7p SOS Main Showroom: Rolando Sanchez & Salsa Hawaii (info. 923-7469)

➤**3-6 & 6-9, Girl Scouts - Cookie Program, Plaza (info. 931-3591)**

➤Giovanni Pastrami: Live Satellite SPORTS (info. 923-2100)

****March Promotions****

~Island Heritage (For more info. call: 923-4400)

~Sushi 2 Go by Kaiwa: Daily Lunch Specials (For more info. call: 924-0555)

~Yard House: March 16 & 17, Special Menu for St. Patrick's Day (info. 923-9273)

Monday, 3/12

OUTRIGGER REEF:
OUTRIGGER WAIKIKI:

➤3-5p Kani Ka Pila Grill: Happy Hour / 6-9p Sean Naauao (info. 924-4990)

➤4-6p Duke's: Haumea Warrington / 9:30p-12a Ellsworth Simeona (info. 922-2268)

➤4p Hula Grill: Aloha Hour / 7-9p Eric Lee (info. 923-4852)

Tuesday, 3/13

HOLIDAY INN WAIKIKI
BEACHCOMBER RESORT:
OUTRIGGER REEF:

➤9a-5p Jimmy Buffett's: Free Surfing Museum Tours (info. 791-1200)

OUTRIGGER WAIKIKI:

➤11a Kuloko Arts of Hawaii: FREE "Watercolor Lessons" w/ Patrice Federspiel (info. 922-5110)

➤3-5p Kani Ka Pila Grill: Happy Hour / 6-9p Weldon Kekauoha (info. 924-4990)

➤4-6p Duke's: Haumea Warrington / 9:30p-12a Ellsworth Simeona (info. 922-2268)

➤4p Hula Grill: Aloha Hour / 7-9p Kamuela Kahoano (info. 923-4852)

➤8:30p SOS Main Showroom: SOCIETY OF SEVEN (info. 923-7469)

WAIKIKI BEACH WALK:

➤**4:30-6p "Ku Ha' aheo" - Evening Hula, Fountain Stage (info. 931-3591)**

Wednesday, 3/14

OUTRIGGER REEF:
OUTRIGGER WAIKIKI:

➤3-5p Kani Ka Pila Grill: Happy Hour / 6-9p Cyril Pahinui (info. 924-4990)

➤4-6p Duke's: Haumea Warrington / 9:30p-12a Ellsworth Simeona (info. 922-2268)

➤4p Hula Grill: Aloha Hour / 7-9p Jeremy Cheng (info. 923-4852)

➤8:30p SOS Main Showroom: SOCIETY OF SEVEN (info. 923-7469)

WAIKIKI BEACH WALK:

➤**4-4:45p "Free" Yoga on the Lawn (info. 922-0171)**

Thursday, 3/15

HOLIDAY INN WAIKIKI
BEACHCOMBER RESORT:
OUTRIGGER REEF:

➤9:00p Jimmy Buffett's: Borderline (info. 791-1200)

OUTRIGGER WAIKIKI:

➤3-5p Kani Ka Pila Grill: Happy Hour / 6-9p Kawika Kahiapo (info. 924-4990)

➤3p Strolling Hawaiian music & hula, Upper & Lower lobby

➤4-6p Duke's: Haumea Warrington / 9:30p-12a Ellsworth Simeona (info. 922-2268)

➤4p Hula Grill: Aloha Hour / 7-9p Sheila Waiwaiole & Mara Sagapolu (info. 923-4852)

➤8:30p SOS Main Showroom: SOCIETY OF SEVEN (info. 923-7469)

Friday, 3/16

HOLIDAY INN WAIKIKI
BEACHCOMBER RESORT:
OUTRIGGER REEF:

➤9:30a-5p Jimmy Buffett's: Free Surfing Museum Tours (info. 791-1200)

➤9:30p Kailua Bay Buddies

OUTRIGGER WAIKIKI:

➤6:30-8:30p Kuloko Arts of Hawaii: Shoji Ledward (info. 922-5110)

➤3-5p Kani Ka Pila Grill: Happy Hour / 6-9p Kaukahi (info. 924-4990)

➤5p Piano by Jeanette Traviata, piano area

➤4-6p Duke's: Maunaloa / 9:30p-12a Lawrence Kidder (info. 922-2268)

➤4p Hula Grill: Aloha Hour / 7-9p Alika Souza & Johnny Kukui w/Kealoha (info. 923-4852)

➤8:30p SOS Main Showroom: SOCIETY OF SEVEN (info. 923-7469)

WAIKIKI BEACH WALK:

➤**3-6 & 6-9, Girl Scouts - Cookie Program, Plaza (info. 931-3591)**

Saturday, 3/17

HOLIDAY INN WAIKIKI
BEACHCOMBER RESORT:
OUTRIGGER REEF:

➤9:30p Jimmy Buffett's: Kailua Bay Buddies (info. 791-1200)

OUTRIGGER WAIKIKI:

➤3-5p Kani Ka Pila Grill: Happy Hour / 6-9p Manoa DNA (info. 924-4990)

➤4-6p Duke's: Kona Chang Duo / 9:30p-12a Chris Murphy Duo (info. 922-2268)

➤3:30p Hula Grill: Aloha Hour / 7-9p Kaipo Dabin & Kauokalani Moikeha w/Kapua (info. 923-4852)

➤SOS Main Showroom: 8:30p, SOCIETY OF SEVEN

WAIKIKI BEACH WALK:

➤**3-6 & 6-9, Girl Scouts - Cookie Program, Plaza (info. 931-3591)**

➤Giovanni Pastrami: Live Satellite SPORTS (info. 923-2100)



Activities are subject to change or cancellation without notice ~ weather permitting



Celebrate Hula and Hawaiian Culture at the 6th Annual International Waikiki Hula Conference

Hundreds of dancers from around the world will gather in Waikīkī this spring to partake in a rare opportunity to experience hula in its native surroundings. The 6th annual International Waikiki Hula Conference will take place May 11 to 13 at the Hawai'i Convention Center. The conference is not only for hula lovers from overseas but is also open to local dancers of all experience levels and anyone interested in hula.

This year's conference theme celebrates Lei Day in Hawai'i, with workshop mele (song) and hula representing flowers or lei, chosen by each kumu hula (hula teacher). Over 40 respected kumu will lead the workshops. For visiting hula students and performers, the conference almost certainly provides the largest possible gathering of Hawai'i-based kumu hula, many of whom do not travel outside Hawai'i to teach. Attendees will have the opportunity to choose from 80 workshops and seminars that cover all aspects of hula – from making an authentic pā'ū la'i (ti-leaf skirt) or an 'ulī 'ulī (feather rattling implement) with one of Hawai'i's master implement crafters, to learning hula or an oli (chant) from award-winning teachers who have participated in the Merrie Monarch Festival.

"The International Waikiki Hula Conference brings together the hula community from around the world for a weekend of appreciation and respect for the art of hula," said Marnie Weeks, International Waikiki Hula Conference producer. "We look forward to welcoming visitors and locals alike as they come together to share and learn from some of the world's most renowned Hawaiian cultural practitioners."

In addition to participating in the workshops, conference registrants will have the opportunity to perform a mele they learned from their workshop kumu at various hō'ike (shows) throughout Waikīkī. Attendees will also participate in the opening ceremonies and closing "Kanikapila" performance, have a chance to take home a piece of Hawai'i from the Hawaiian Vendor Mall, and receive a certificate of completion at the end of the conference.

This year's conference will also feature an international-juried Hawaiian quilt competition, the first of its kind in Hawai'i, drawing from submissions from around the world and focusing on Hawaiian floral design in honor of Lei Day.

Registration is \$385 (\$250 for kama'āina – Hawai'i residents) for the full three days. Group rates are offered for groups of 10 or more. For more information or to register for the conference, please visit <http://www.waikikihulaconference.com>.

